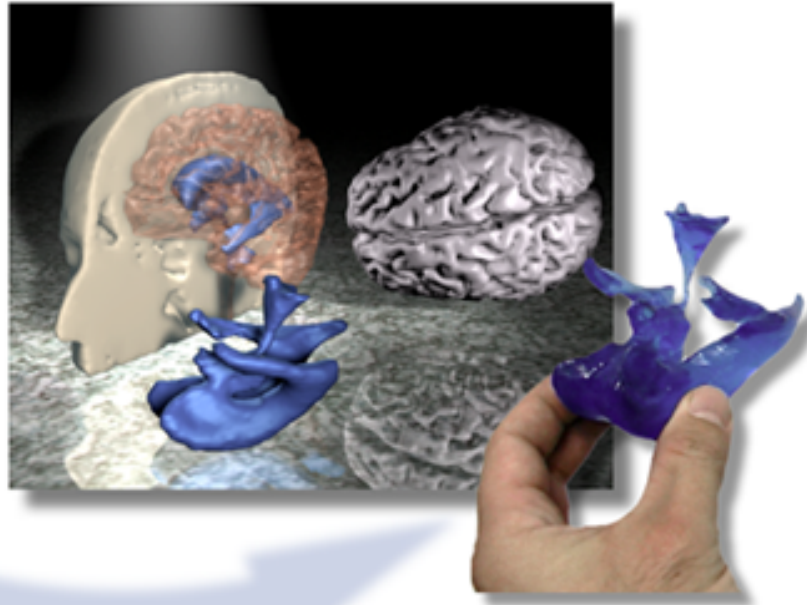


Convert Patient Data and Create Handheld Physical Models using the Latest in Technology



Why Explain Your Case with Hard to Understand 2D Data? Build a 3D Model using Rapid Prototyping

The image data shown in the graphic above is from an actual case, where Javelin was used to produce physical, 3D models. In this situation, the patient's brain was injured and rather than present the 2D gray-scale scans, an actual model of the patient's brain was built by Javelin on a Rapid Prototyping machine. A "healthy" male brain was also built on a Rapid Prototyping system. When the two plastic models of the brains were compared, it was very apparent that there were significant problems with the patient's brain and that the patient was not "just depressed", as claimed by the insurance company.

The Velocity Pro™ software used by Javelin 3D allows them to import CT and MR medical data and produce a 3D reconstruction, export the 3D file, and create an anatomically-correct medical model on any RP system. For more information, please contact Javelin directly at:

435-615-7729 javelin@javelin3d.com

